

# CHANNEL & SUPPORT SYSTEMS



Standard Finish on Channel Brackets

## 45° Angle Bracket

Ref.325AF14



## Acute Angle Bracket 45°

Ref.325AH11



## Obtuse Angle Bracket 45°

Ref.325AD17



Other angles to Order

## Shallow External Connector

Ref.325AK11



## Shallow Connector

Ref.336AB07

M10 setscrews supplied separately.



## Deep Connector

Ref.336AB08



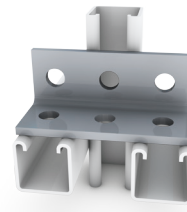
## Deep External Connector

Ref.325AK10



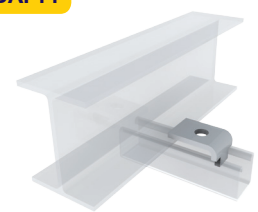
## Cross Support Bracket

Ref.325AB10



## Beam Clamp

Ref.325AP11

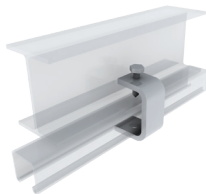


## Beam Clamp

Ref.325AX10

Including M12x40 Cone point screw

For Flange thickness up to 18mm.



## Beam Clamp

Ref.325AX11

Including M12x40 Cone point screw

For Flange thickness up to 17mm.

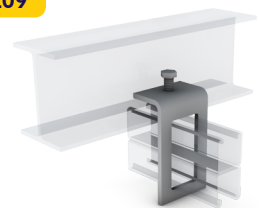


## Beam Clamp (Deep Back to Back Window)

Ref.325AL09

Including M10x40 Cone point screw

For Flange thickness up to 15mm.

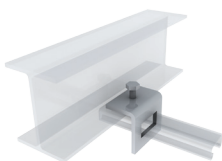


## Beam Clamp (Shallow Channel)

Ref.325AL11

Including cone point set screw.

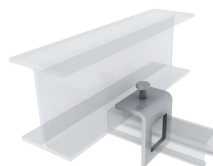
For Flange thickness up to 15mm.



## Beam Clamp (Deep Channel)

Ref.325AL10

Including cone point set screw.

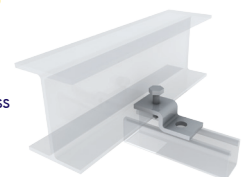


## Beam Clamp

Ref.325AP10

Including cone point set screw.

For Flange thickness up to 17mm.



Standard Trunking

Multi Compartment Trunking

Lighting Trunking

Uniklip Cable Tray

Speedway Cable Ladder

Cable Basket Systems

Channel & Support

Floor Trunking

Bench Outlet & Perimeter Trunking

Steel Conduit (Class 4)

Innovative Design Solutions

Accessories & Supports

Index